

ACES: Livelihoods and land use change in Mozambique



Start date: 30th November 2013
miomboaces.wordpress.com/

Genevieve Patenaude
genevieve.patenaude@ed.ac.uk

Team

Luis Artur, Romana Bandeira, Natasha Ribeiro, Almeida Siteo (**U Eduardo Mondlane**); Janet Fisher, Patrick Meir, Marc Metzger, James Paterson, Mark Rounsevell, Casey Ryan, Frank Vollmer, Emily Wollen (**U Edinburgh**); Isla Grundy (**U Zimbabwe**); Duncan Macqueen, Isilda Nhantumbo (**IIED**); Lennart Olsson (**Lund**); Jean Ometto, Patricia Pinho (**INPE**). Partners MICAIA Foundation; LUPA and Centro Terra Viva



THE UNIVERSITY of EDINBURGH



ACES: Livelihoods and land use change in MZ

Rural households depend on ES derived from woodlands



How woodland loss and agricultural expansion affect wellbeing of poorest ?

Mozambique's 'growth corridor' hopes to tackle poverty and turn a profit

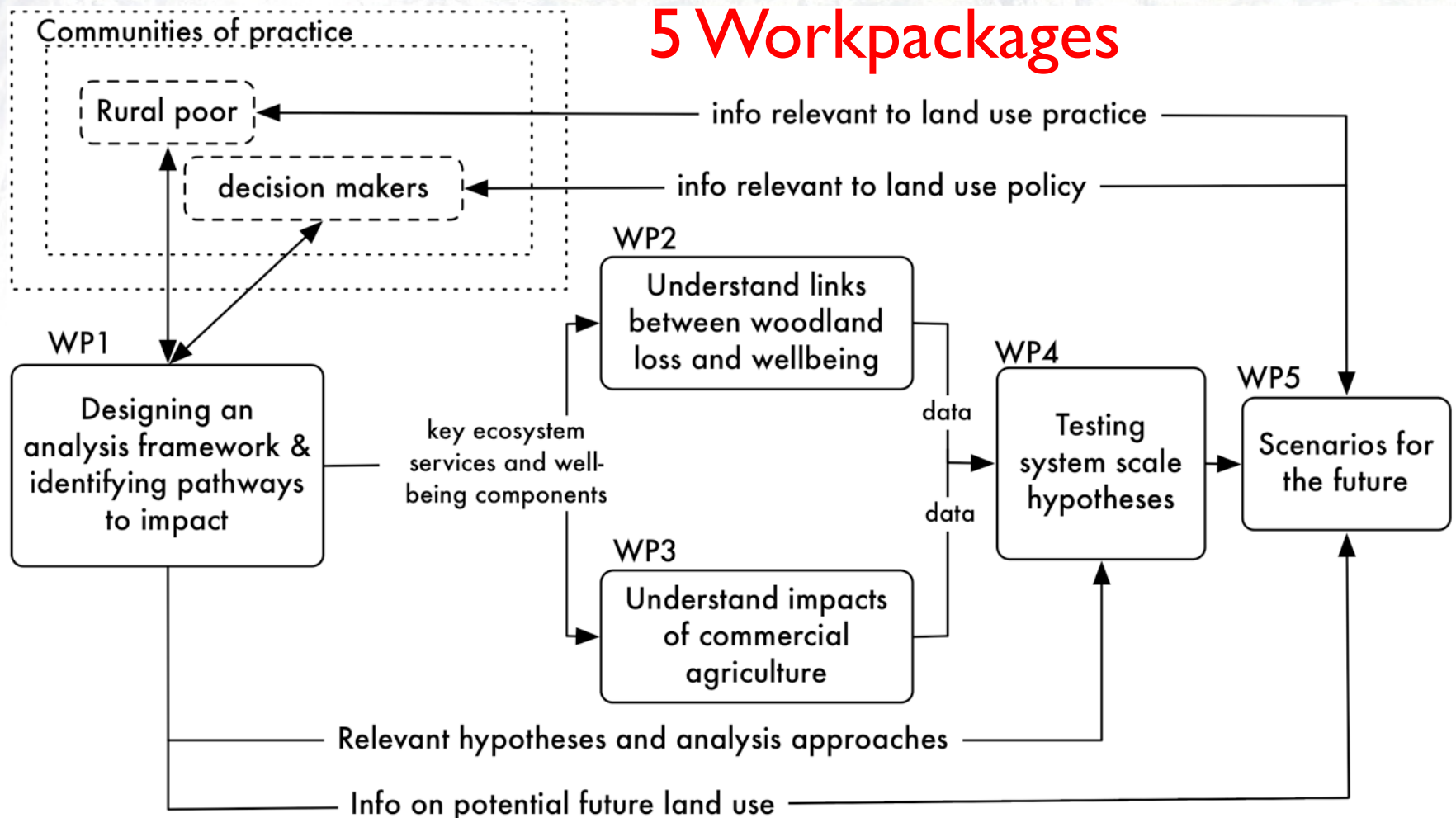
Ambitious scheme aims to transform thousands of subsistence farmers into smallholders supplying big food purchasers



Alex Duval Smith in Maputo

The Guardian, Monday 10 December 2012 18.43 GMT

To provide an assessment of how changing land cover relates to wellbeing in Africa's dominant ecosystem:



The ESPA programme is funded by the Department for International Development (DFID), the Economic and Social Research Council (ESRC) and the Natural Environment Research Council (NERC), as part of the UK's Living with Environmental Change (LWEC) programme.